

# ME25 / MV25 Series

**HAND PALLET TRUCK**  
**2.5 TONNES**



**WHEN**  
**RELIABILITY IS**  
**EVERYTHING...**

 **MITSUBISHI**  
FORKLIFT TRUCKS

# ME25 / MV25 Series

ROBUST AND RELIABLE  
A WAREHOUSE WORKHORSE

## HAND PALLET TRUCK

2.5 tonnes

| Model    | Load capacity | Model     | Load capacity |
|----------|---------------|-----------|---------------|
| ME25HNSN | 2500 kg       | ME25MPTP  | 2500 kg       |
| ME25IPTP | 2500 kg       | ME25MRTP  | 2500 kg       |
| ME25JNSN | 2500 kg       | ME25WPTP  | 2500 kg       |
| ME25JPTP | 2500 kg       | MV25H RTP | 2500 kg       |
| ME25LPTP | 2500 kg       | MV25IPTP  | 2500 kg       |
| ME25MNSN | 2500 kg       | MV25IRTP  | 2500 kg       |
| ME25MNTN | 2500 kg       | MV25MNSN  | 2500 kg       |
| ME25MPSP | 2500 kg       | MV25MNTN  | 2500 kg       |

| Model    | Load capacity |
|----------|---------------|
| MV25MPSP | 2500 kg       |
| MV25MPTP | 2500 kg       |
| MV25MRTP | 2500 kg       |
| MV25OPSP | 2500 kg       |
| MV25ORTP | 2500 kg       |



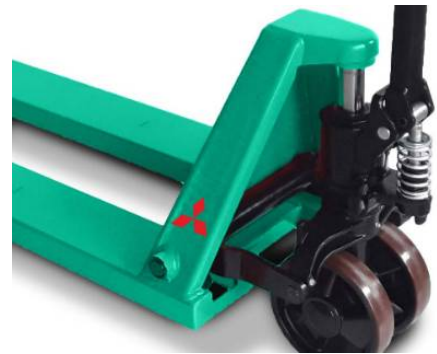
Simple and effective in retail and warehousing applications, our hand pallet trucks have been designed to work hard and give long-lasting performance with minimal servicing. ME25 models are our premium pallet trucks which have been designed in European markets for European markets. MV25 models are also available as an economical alternative.

Able to transport loads up to 2.5 tonnes, its durable design increases productivity and efficiency in warehouse and retail applications and provides ultimate long-term value.

# POPULAR FEATURES

## ROBUST FRAME

The hand pallets are ultra durable and can cope with the toughest shifts thanks to the exceptionally strong reinforced steel construction.



## ERGONOMIC HIGH-STRENGTH POLYAMIDE HANDLE

This offers better heat and cold temperature resistance compared to a traditional steel handle. This makes working in different environments (such as cold storage) more comfortable for operators as well as being much safer. (ME models)



## COMPACT DESIGN WITH TIGHT TURNING CIRCLE

Unrivalled manoeuvrability in small spaces due to its 210° steering angle. Can help to keep aisles narrow and productivity high.



# FEATURES

## FORKS

**Rounded tips**

Tip rollers for easy pallet entry.

**Rising forks**

Minimum height: 85 mm. Maximum height: 200 mm. (MV25 models)

## FRAME AND BODY

**Wide range of wheels**

Available for use in various applications, along with customised designs to suit your application. (ME25 models)

**High stability**

High stability due to the design of the compound wheel connector sets, swing arms, and levers. (ME25 models)

**Integrated ABCF pump**

Heavy-duty construction for durability and features overload protection and foot pedal. (540 x 1150 MV25 models)

**Durable chassis**

Powder coating phosphate pretreatment on heavy-gauge steel gives enhanced corrosion protection and improved friction properties when handling loads.

**210-degree turning radius**

Exceptional movement in tight spaces. (ME25 models)

## OPERATOR COMPARTMENT AND CONTROLS

**Infinitely variable speed control**

Specially designed valve allows precise control of lowering speed via the release handle. (ME25 models)

**Polyurethane handle**

Ergonomically shaped and highly durable. User-friendly lever design of all sizes. Temperature remains stable to touch even in hot and cold conditions. (ME25 models)

**Ergonomic handle**

Comfortable design to suit a range of hand sizes. Tough coating for a long life. (MV25 models)

**Control lever**

Lever features three operating positions: raise, lower, and neutral. (MV25 models)

## STEERING SYSTEM

**Self-lubricating slide bearings**

These are used in all rotary and swinging connections for maximum durability. (ME25 models)

## OTHER FEATURES

**2 years full warranty**

Offers extra peace of mind in the unlikely event of a failure. (ME25 models)

**Multiple configurations and fork sizes available**

Choice of models to suit different pallet sizes and applications. (ME25 models)

**Stainless steel versions**

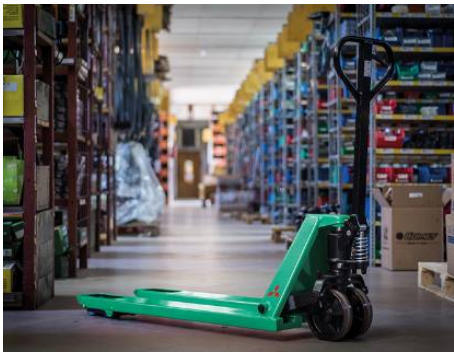
These are specially designed for the food industry. (ME25 models)

**Notes:**

Continuing improvement may lead to changes in these specifications.



# GALLERY



# WHEN RELIABILITY IS EVERYTHING...

Like any product bearing the Mitsubishi Forklift Trucks name, our materials handling equipment benefits from the tremendous heritage, huge resources and cutting-edge technology of one of the world's largest corporations - Mitsubishi Heavy Industries Group.

Engineering spacecraft, jet planes, power plants and more, MHI specialises in those technologies where performance, dependability and superiority decide your success or failure...

So when we promise you quality, reliability and value for money, you know it's a guarantee we have the power to deliver.

## **YOU'LL NEVER WORK ALONE**

As your local authorised dealer, we are here to keep your trucks working - through our extensive experience, our technical excellence and our commitment to customer care.

We are your local experts, backed by efficient channels to the entire organisation of Mitsubishi Forklift Trucks.

No matter where you are, we are close by - with the capability to meet your needs.



Performance specifications may vary depending on standard manufacturing tolerances, vehicle condition, types of tyres, floor or surface conditions, applications or operating environment. Trucks may be shown with non-standard options. Specific performance requirements and locally available configurations should be discussed with your distributor. We follow a policy of continual product improvement. For this reason, some materials, options and specifications could change without notice.

Mitsubishi Logisnext Europe B.V.  
Hefbrugweg 77, 1332 AM Almere,  
The Netherlands  
Tel +31 36 54 94 311

**QUALITY | RELIABILITY | VALUE FOR MONEY**

Created 05 June 2025, 11:46:07 AM

© 2025 MLE B.V. (registration no. 33274459). All rights reserved.